

WB

X

COLLECTION

THE PORTSEA



WB

X

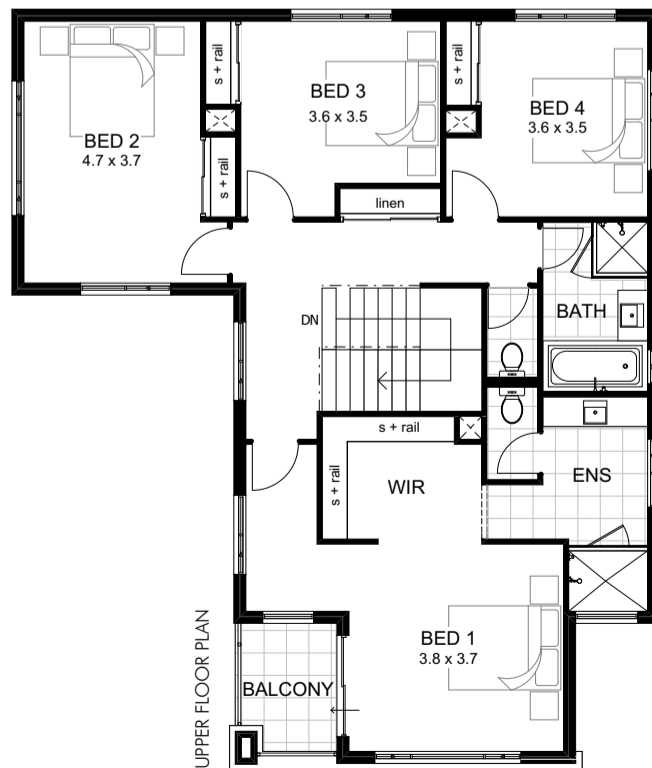
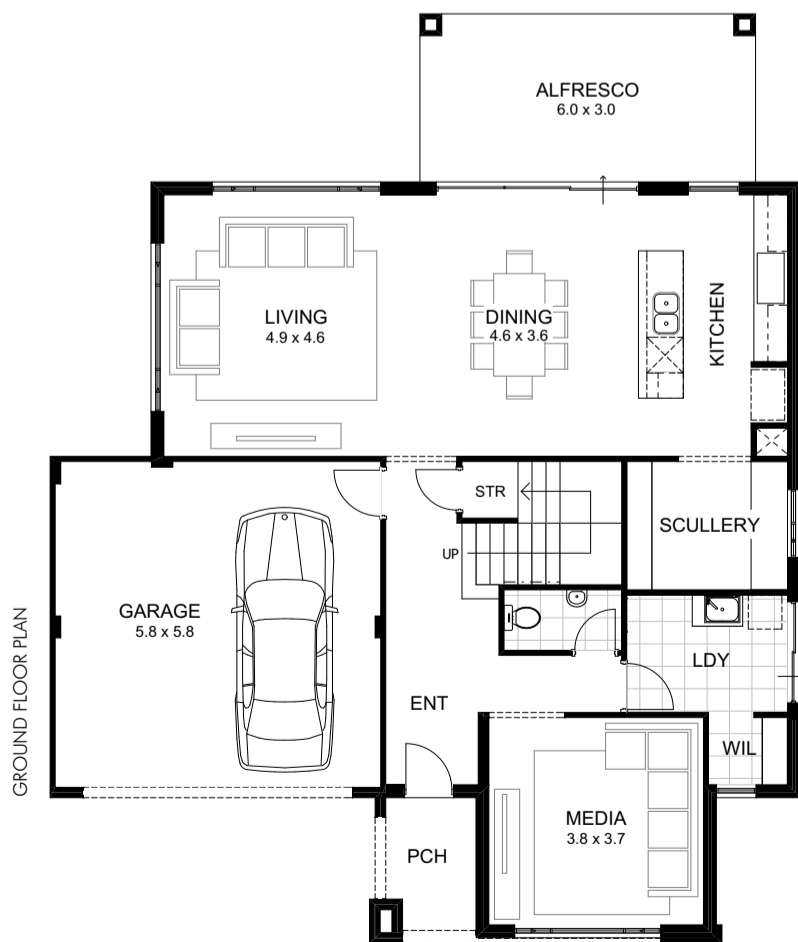
COLLECTION

WB X IS ALL ABOUT YOU. IT'S ABOUT SPACES TO LIVE, LOVE AND GROW, IT'S WHAT YOU WORK HARD FOR AND WHAT YOU ASPIRE TO. WB X IS ABOUT MAKING THAT DREAM COME TO LIFE.

THE PORTSEA

TOTAL 290.76m<sup>2</sup>

GROUND FLOOR - 113.50m<sup>2</sup> | UPPER FLOOR - 114.14m<sup>2</sup> | GARAGE - 35.56m<sup>2</sup>  
BALCONY - 4.83m<sup>2</sup> | PORCH - 4.76m<sup>2</sup> | ALFRESCO - 17.97m<sup>2</sup>  
BED 4 | BATH 2



# THE WB DIFFERENCE

**25**  
YEAR

## STRUCTURAL GUARANTEE

We stand behind the quality of all our homes and back them with a 25 Year Structural Guarantee, giving you complete confidence year after year.

**12**  
MONTH

## SERVICE WARRANTY

Our commitment to you does not end when we hand over the keys to your beautiful new home. We offer a 12 month Service Warranty.

EST.  
**1978**

## DECADES OF SUCCESS.

Four decades on, it's no secret that when it comes to building luxury homes in Perth, our expertise is second to none.

**1st**

## AWARD-WINNING DESIGN TEAM

With innovation and design at the forefront, our award-winning design team can reflect the very essence of your own unique lifestyle.

Contact 9208 9000 or [info@wbhomes.com.au](mailto:info@wbhomes.com.au) or visit [wbhomes.com.au](http://wbhomes.com.au)  
129 Hasler Road, Osborne Park, WA 6017



# WB

WEBB & BROWN-NEAVES